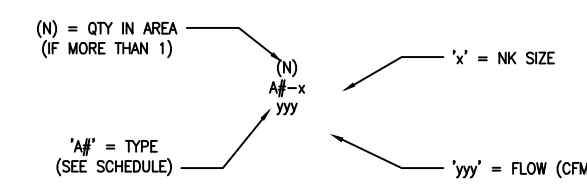


TYPE	DESCRIPTION	BASIS OF DESIGN		NK SIZE	PANEL SIZE	FINISH	NOTES
		MANUFACTURER	MODEL				
S1	STEEL LOUVERED SUPPLY DIFFUSER	KRUEGER	SHR-01	AS SHOWN	24"x24"	#44 BRITISH WHITE	1-WAY; PROVIDE 5/16" STEP DOWN FRAME
S2	STEEL LOUVERED SUPPLY DIFFUSER	KRUEGER	SHR-02	AS SHOWN	24"x24"	#44 BRITISH WHITE	2-WAY (90°); PROVIDE 5/16" STEP DOWN FRAME
S3	STEEL LOUVERED SUPPLY DIFFUSER	KRUEGER	SHR-02	AS SHOWN	24"x24"	#44 BRITISH WHITE	2-WAY (180°); PROVIDE 5/16" STEP DOWN FRAME
S4	STEEL LOUVERED SUPPLY DIFFUSER	KRUEGER	SHR-03	AS SHOWN	24"x24"	#44 BRITISH WHITE	3-WAY; PROVIDE 5/16" STEP DOWN FRAME
S5	STEEL LOUVERED SUPPLY DIFFUSER	KRUEGER	SHR-04	AS SHOWN	24"x24"	#44 BRITISH WHITE	4-WAY; PROVIDE 5/16" STEP DOWN FRAME
S6	STEEL LOUVERED SUPPLY DIFFUSER	KRUEGER	SHR-01	AS SHOWN	12"x12"	#44 BRITISH WHITE	1-WAY; PROVIDE 5/16" STEP DOWN FRAME
R1	STEEL PERFORATED RETURN GRILLE	KRUEGER	6490-90	6x18	12"x24"	#44 BRITISH WHITE	PROVIDE 5/16" STEP DOWN FRAME
T1	STEEL SIDE WALL TRANSFER GRILLE	KRUEGER	800-H-1248-F22	12x8	N/A	#44 BRITISH WHITE	MOUNT ABOVE CEILING; INSTALL 6" LENGTH OF STRAIGHT DUCT THROUGH THE PARTITION
T2	STEEL SIDE WALL TRANSFER GRILLE	KRUEGER	800-H-2410-F22	24x10	N/A	#44 BRITISH WHITE	MOUNT ABOVE CEILING; INSTALL 6" LENGTH OF STRAIGHT DUCT THROUGH THE PARTITION
E1	6" ROUND EXHAUST GRILLE	FANTECH	DD2 6	6"	N/A	STANDARD WHITE	PROVIDE 6" TO 5" DUCT TRANSITION

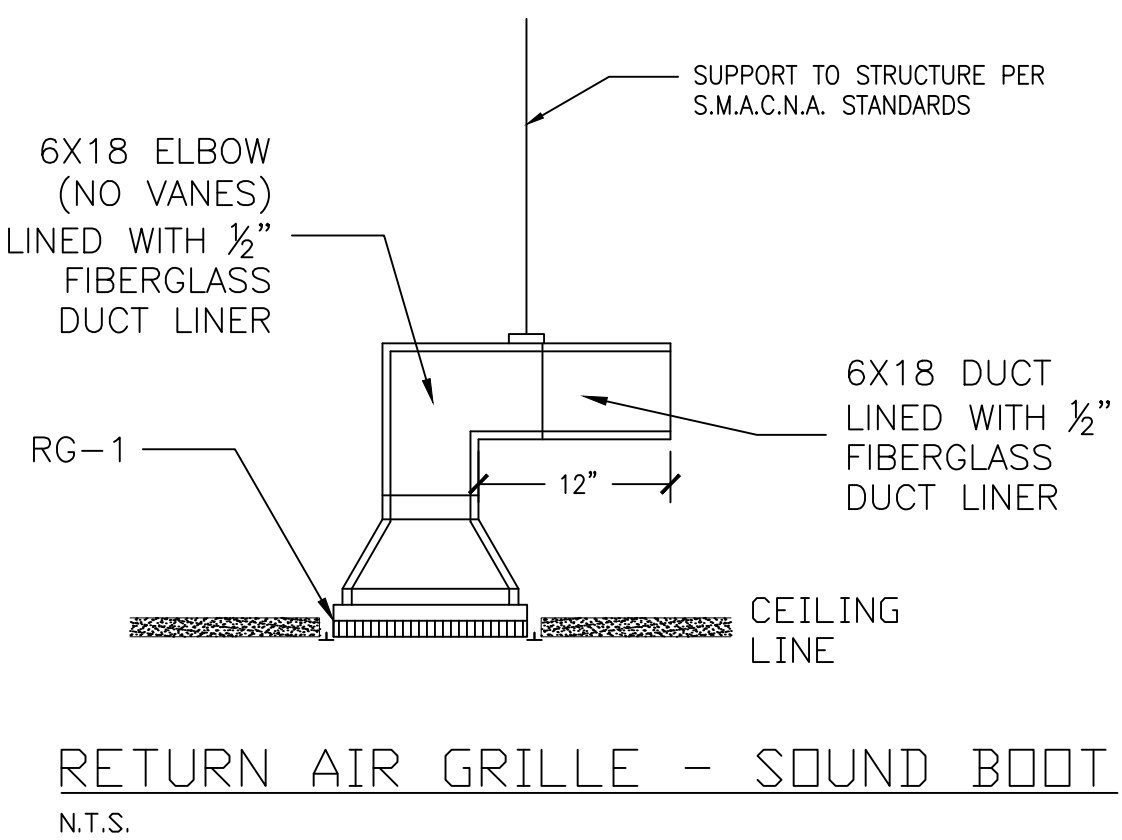
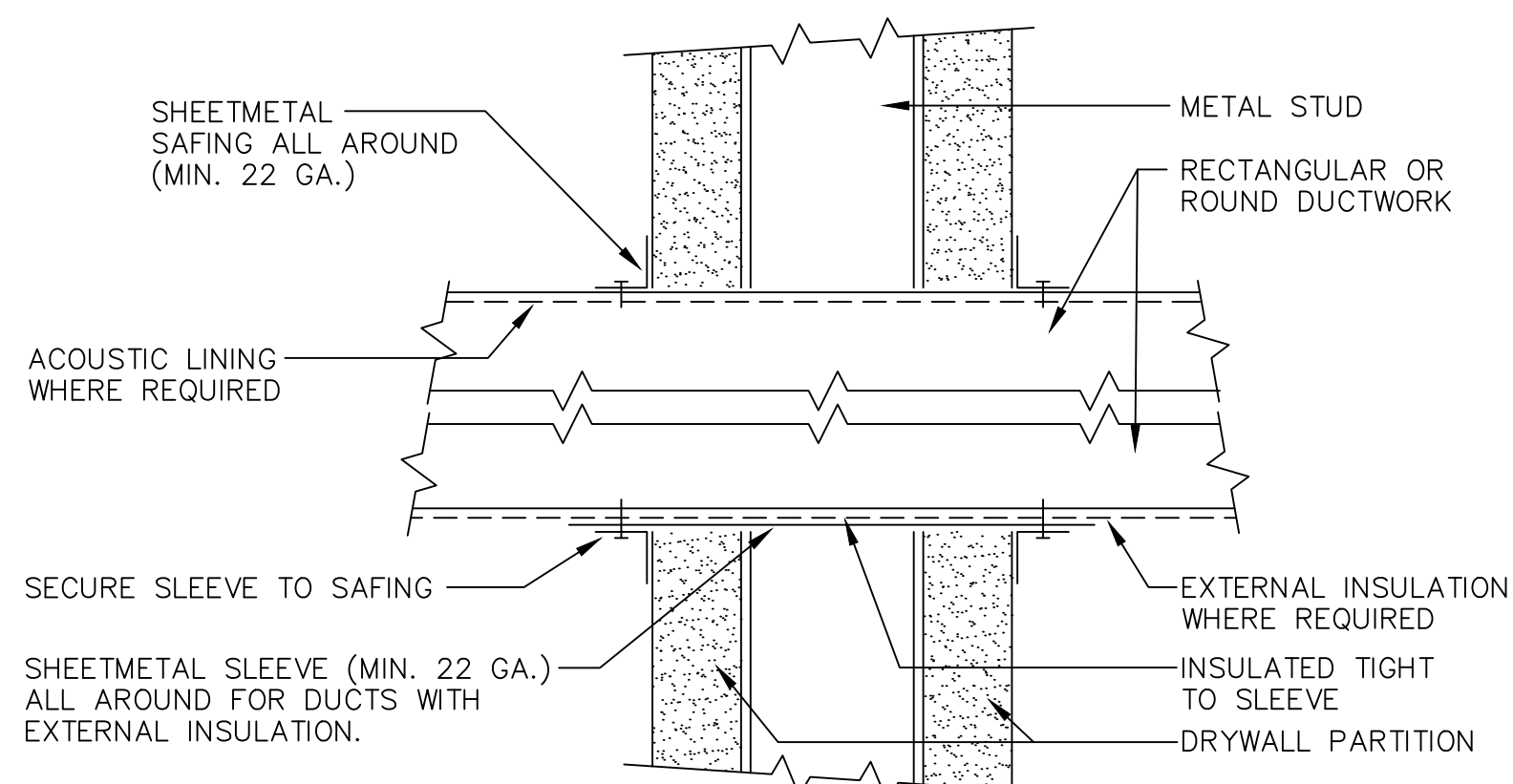
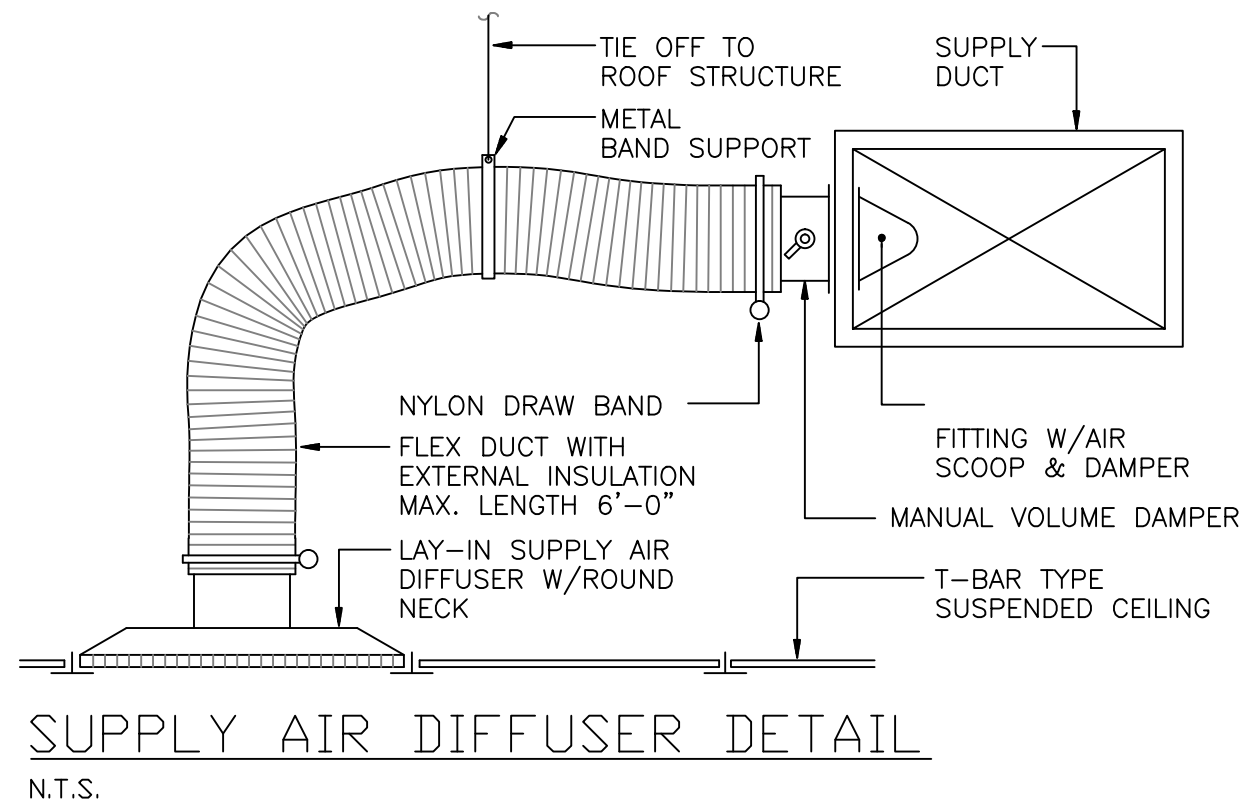
NOMENCLATURE ON DRAWINGS:



GENERAL NOTE:  
1. INSTALL SOUND BOOT ON ALL RETURN GRILLES. SEE DETAIL THIS SHEET.

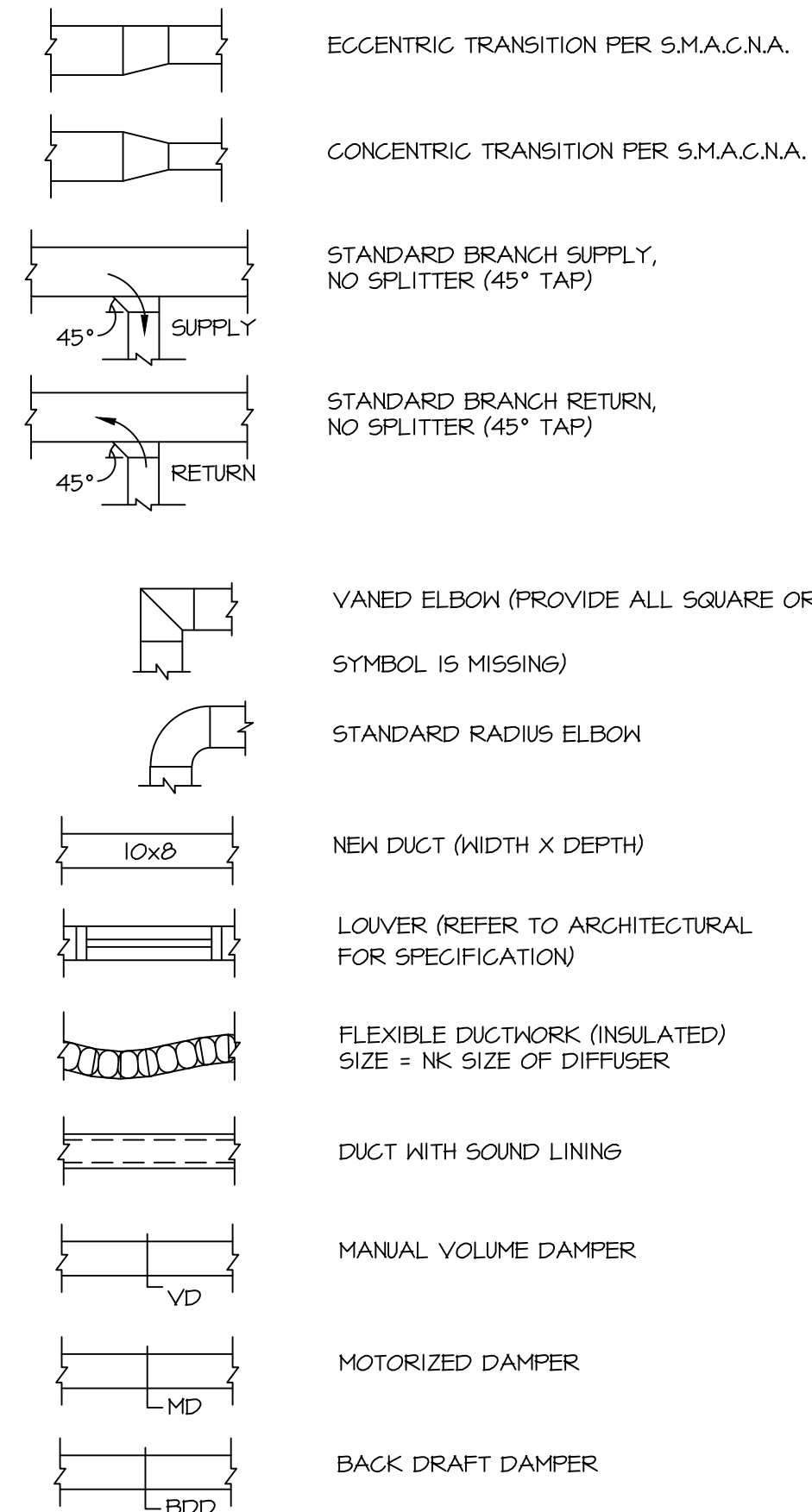
EXAMPLE: (2) S3-10 300 QTY: 2 - TYPE S3, 10" NK, 300CFM

ID	BASIS OF DESIGN		CFM	STATIC PRES. (IN. W.G.)	MOTOR				NOTES	
	MANUFACTURER	MODEL			HP	RPM	VOLTS	PH		AMPS
EF-1	FANTECH	FG 6XL	243	1.25	1/12	2900	120	1	<1	
EF-2	FANTECH	FG 5XL	112	0.8	1/12	2700	120	1	<1	

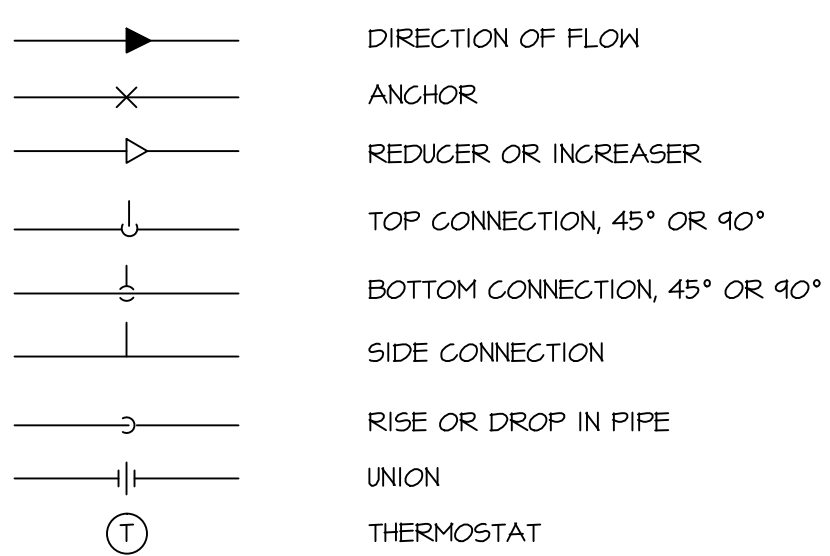


MECHANICAL LEGEND

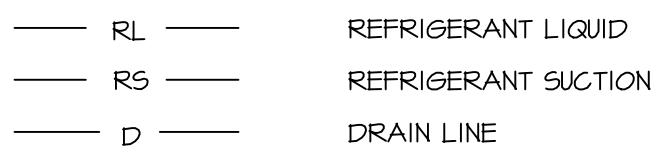
DUCTWORK SYMBOLS



GENERAL SYMBOLS

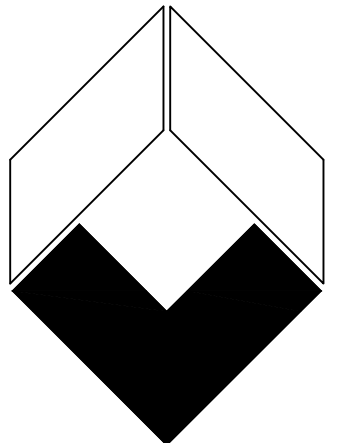


PIPING SYMBOLS



ABBREVIATIONS

- AC AIR CONDITIONING UNIT
- AD ACCESS DOOR
- AHU AIR HANDLING UNIT
- CD CEILING DIFFUSER
- CFM CUBIC FEET PER MINUTE
- CJ CONDENSING UNIT
- CUH CABINET UNIT HEATER
- CW COLD WATER
- DD DRY BULB TEMPERATURE DOWN
- EA EXHAUST AIR
- E.C. ELECTRICAL CONTRACTOR
- EF EXHAUST FAN
- ESP EXTERNAL STATIC PRESSURE
- FC FLEXIBLE CONNECTION
- 7H DIFFERENTIAL ENTHALPY
- HP HORSE POWER
- M.C. MECHANICAL CONTRACTOR
- MD MOTORIZED DAMPER
- OA OUTDOOR AIR
- P.C. PLUMBING CONTRACTOR
- PN PNEUMATIC
- R.T.U. ROOFTOP UNIT
- SP STATIC PRESSURE
- W.M.S. WIRE MESH SCREEN



a. paul Varanouskas > architect

architecture 46 foster road - suite 1  
 planning hopewell jct. ny 12533  
 interior design t 845-223-1009  
 f 845-223-1909

All ideas, designs, plans & specifications indicated or represented by this drawing are by, and are the property of A. Paul Varanouskas, Architect. Any unauthorized use of these drawings or parts thereof without the written permission of the architect, shall be proscribed.

Rev.	Date	Remarks
1		

**WE WHITMAN ENGINEERING, P.C.**  
 consultants planners designers  
 mechanical electrical plumbing  
 33 Arlington Avenue  
 Poughkeepsie, NY 12603  
 845-471-6036

KEY PLAN NOT TO SCALE

Proposed Alterations For  
**Ophthalmology Department**  
 at  
 90 South Bedford Road  
 Mount Kisco, NY 10549

Date: 1-11-10	Project No: 90051
Drawn By: KMW	Scale: AS NOTED

**MECHANICAL DRAWING  
 HVAC LAYOUT**

Seal Drawing No:  
**M - 2**