

SUCF PROJECT NO. 29393
 CRITICAL MAINTENANCE
 EXTERIOR ENVELOPE
 VISUAL ARTS #58

CAMPUS
 PURCHASE COLLEGE
 STATE UNIVERSITY OF NEW YORK
 735 ANDERSON HILL ROAD
 PURCHASE, NY 10577

CLIENT
 STATE UNIVERSITY CONSTRUCTION FUND
 353 BROADWAY
 ALBANY, NY 12246
 518.689.2605

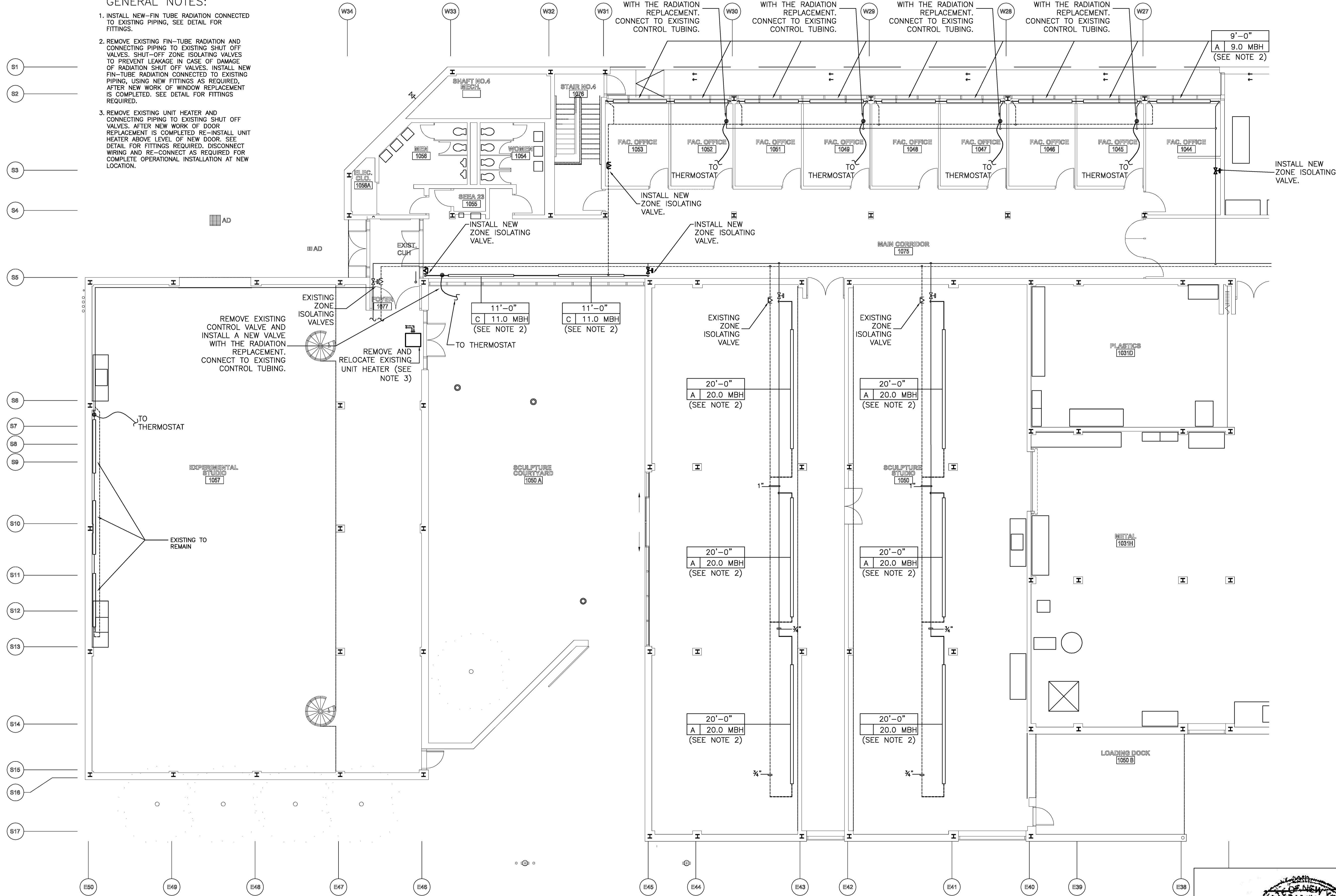
ARCHITECT
 ROBERT SIEGEL ARCHITECTS
 37 WEST 37th STREET, 12th FLOOR
 NEW YORK, NY 10018
 212.921.5600
 www.robertsiegelarchitects.com

LIGHTING & ELECTRICAL
 WHITEHOUSE LIGHTING DESIGN
 4 TENNIS COURT ROAD
 MAHOPAC, NY 10541
 914.923.0021

ENVIRONMENTAL
 ADELAIDE ENVIRONMENTAL HEALTH ASSOCIATES
 1511 ROUTE 22 SUITE C24
 BREWSTER, NY 10509
 845.278.7710

GENERAL NOTES:

1. INSTALL NEW-FIN TUBE RADIATION CONNECTED TO EXISTING PIPING. SEE DETAIL FOR FITTINGS.
2. REMOVE EXISTING FIN-TUBE RADIATION AND CONNECTING PIPING TO EXISTING SHUT OFF VALVES. SHUT-OFF ZONE ISOLATING VALVES TO PREVENT LEAKAGE IN CASE OF DAMAGE OF RADIATION SHUT OFF VALVES. INSTALL NEW FIN-TUBE RADIATION CONNECTED TO EXISTING PIPING, USING NEW FITTINGS AS REQUIRED. AFTER NEW WORK OF WINDOW REPLACEMENT IS COMPLETED. SEE DETAIL FOR FITTINGS REQUIRED.
3. REMOVE EXISTING UNIT HEATER AND CONNECTING PIPING TO EXISTING SHUT OFF VALVES. AFTER NEW WORK OF DOOR REPLACEMENT IS COMPLETED RE-INSTALL UNIT HEATER ABOVE LEVEL OF NEW DOOR. SEE DETAIL FOR FITTINGS REQUIRED. DISCONNECT WIRING AND RE-CONNECT AS REQUIRED FOR COMPLETE OPERATIONAL INSTALLATION AT NEW LOCATION.



9'-0"
 A | 9.0 MBH
 (SEE NOTE 2)

REMOVE EXISTING CONTROL VALVE AND INSTALL A NEW VALVE WITH THE RADIATION REPLACEMENT. CONNECT TO EXISTING CONTROL TUBING.

REMOVE AND RELOCATE EXISTING UNIT HEATER (SEE NOTE 3)

REMOVE EXISTING CONTROL VALVE AND INSTALL A NEW VALVE WITH THE RADIATION REPLACEMENT. CONNECT TO EXISTING CONTROL TUBING.

REMOVE EXISTING CONTROL VALVE AND INSTALL A NEW VALVE WITH THE RADIATION REPLACEMENT. CONNECT TO EXISTING CONTROL TUBING.

REMOVE EXISTING CONTROL VALVE AND INSTALL A NEW VALVE WITH THE RADIATION REPLACEMENT. CONNECT TO EXISTING CONTROL TUBING.

REMOVE EXISTING CONTROL VALVE AND INSTALL A NEW VALVE WITH THE RADIATION REPLACEMENT. CONNECT TO EXISTING CONTROL TUBING.

11'-0"
 C | 11.0 MBH
 (SEE NOTE 2)

11'-0"
 C | 11.0 MBH
 (SEE NOTE 2)

20'-0"
 A | 20.0 MBH
 (SEE NOTE 2)

20'-0"
 A | 20.0 MBH
 (SEE NOTE 2)

20'-0"
 A | 20.0 MBH
 (SEE NOTE 2)

20'-0"
 A | 20.0 MBH
 (SEE NOTE 2)

20'-0"
 A | 20.0 MBH
 (SEE NOTE 2)

20'-0"
 A | 20.0 MBH
 (SEE NOTE 2)

INSTALL NEW ZONE ISOLATING VALVE.

INSTALL NEW ZONE ISOLATING VALVE.

EXISTING TO REMAIN

LOADING DOCK
 1060 B

WRITTEN SPECIFICATIONS ARE PART OF THESE DOCUMENTS.

PROJECT 0801
 DRAWN BY RFB
 DATE 1.27.2010
 SCALE 1/8"=1'-0"
 DRAWING TITLE

LEVEL 1
 PLAN - SOUTH

DRAWING NO.

M-104

