

SUCF PROJECT NO. 29393
 CRITICAL MAINTENANCE
 EXTERIOR ENVELOPE
 VISUAL ARTS #58

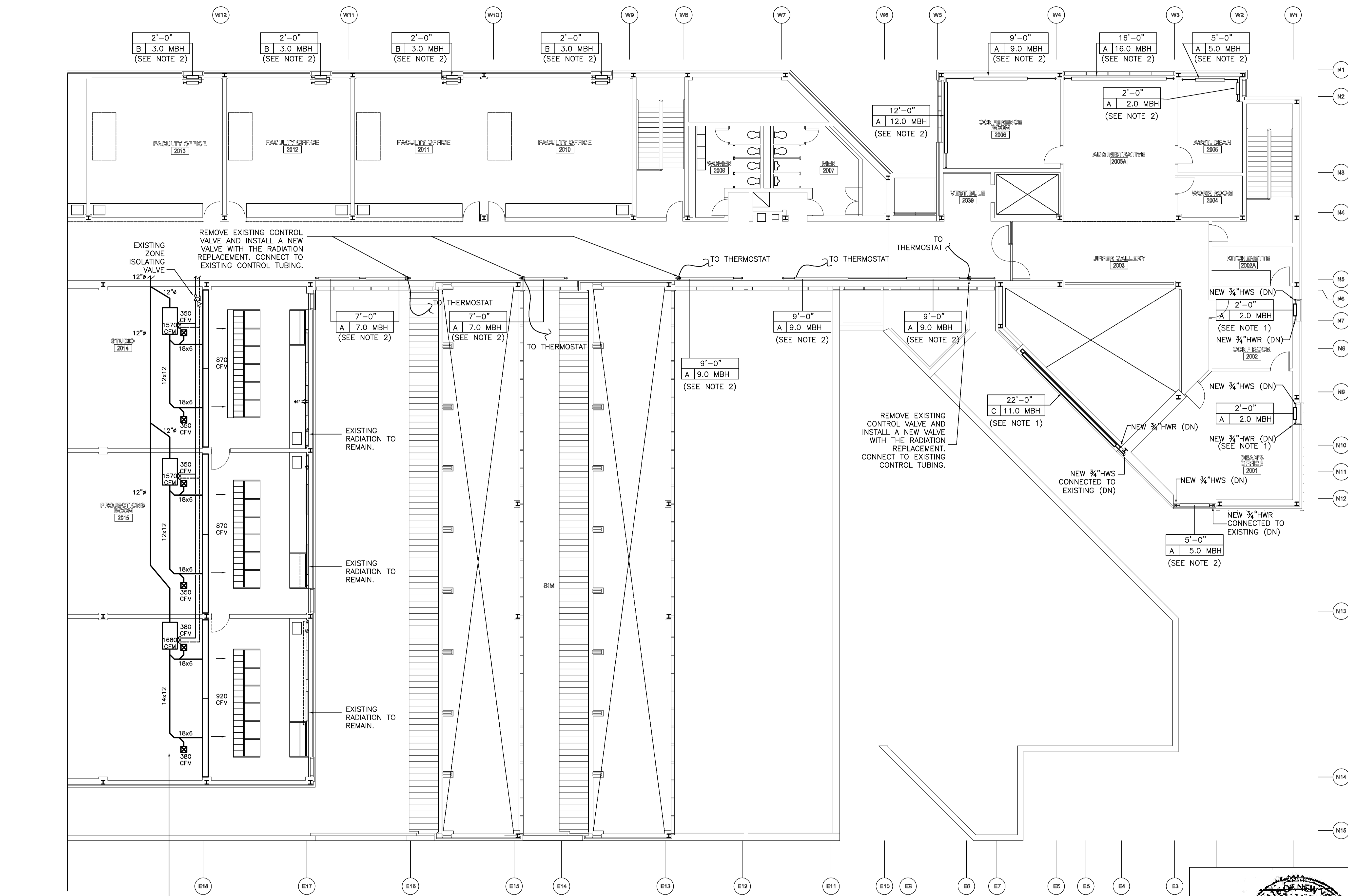
CAMPUS
 PURCHASE COLLEGE
 STATE UNIVERSITY OF NEW YORK
 735 ANDERSON HILL ROAD
 PURCHASE, NY 10577

CLIENT
 STATE UNIVERSITY CONSTRUCTION FUND
 353 BROADWAY
 ALBANY, NY 12246
 518.689.2605

ARCHITECT
 ROBERT SIEGEL ARCHITECTS
 37 WEST 37th STREET, 12th FLOOR
 NEW YORK, NY 10018
 212.921.5600
 www.robertsiegelarchitects.com

LIGHTING & ELECTRICAL
 WHITEHOUSE LIGHTING DESIGN
 4 TENNIS COURT ROAD
 MAHOPAC, NY 10541
 914.923.0021

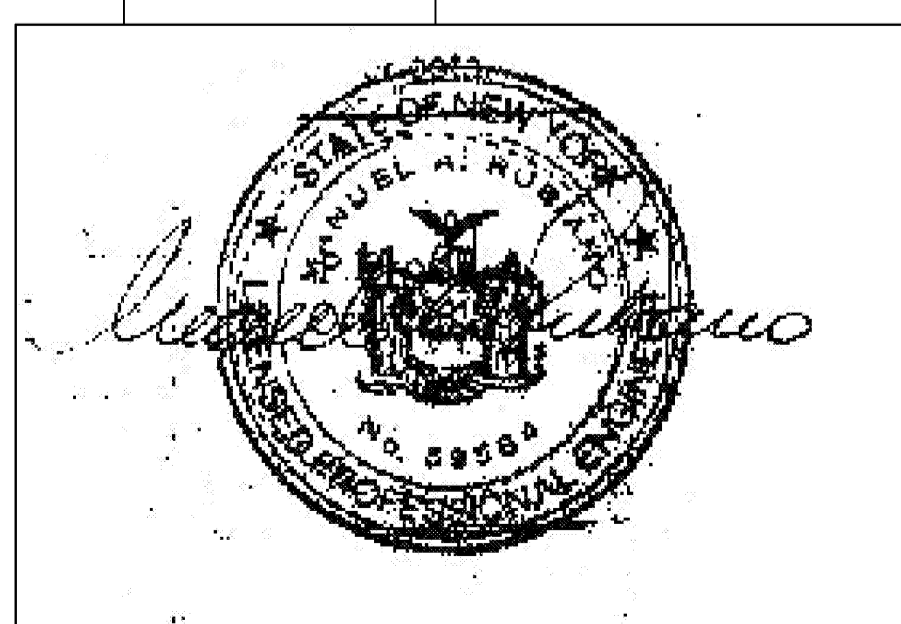
ENVIRONMENTAL
 ADELAIDE ENVIRONMENTAL HEALTH ASSOCIATES
 1511 ROUTE 22 SUITE C24
 BREWSTER, NY 10509
 845.278.7710



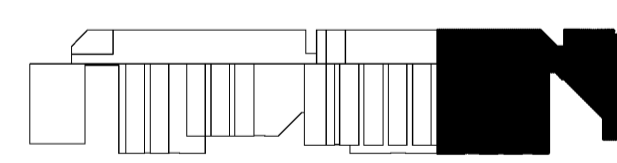
BEFORE REMOVING EXISTING HIGH PRESSURE DUCTWORK, PRV BOXES, LOW PRESSURE DUCTWORK, DIFFUSERS, CONTRACTOR SHALL TEST THE OPERATION OF THE SYSTEM AND REPORT TO THE ENGINEER ANY MALFUNCTIONS OF THE SYSTEM.

REMOVE EXISTING HIGH PRESSURE DUCTWORK, PRV BOXES, LOW PRESSURE DUCTWORK, DIFFUSERS, AND CONNECTING PIPING, TO PERMIT INSTALLATION OF NEW STRUCTURAL STEEL. RE-INSTALL HIGH PRESSURE DUCTWORK, PRV BOXES, LOW PRESSURE DUCTWORK, CEILING DIFFUSERS, LINEAR DIFFUSERS AND RE-CONNECT PIPING. CONTRACTOR TO USE NEW MATERIALS MATCHING THE TYPE AND QUALITY OF THE EXISTING IF REMOVED MATERIALS ARE DAMAGED OR NOT WORKING PROPERLY. CONNECT CONTROLS TO EXISTING PNEUMATIC TUBING AS REQUIRED FOR COMPLETE OPERATIONAL INSTALLATION.

- GENERAL NOTES:
1. INSTALL NEW-FIN TUBE RADIATION CONNECTED TO EXISTING PIPING. SEE DETAIL FOR FITTINGS.
 2. REMOVE EXISTING FIN-TUBE RADIATION AND CONNECTING PIPING TO EXISTING SHUT OFF VALVES. SHUT-OFF ZONE ISOLATING VALVES TO PREVENT LEAKAGE IN CASE OF DAMAGE OF RADIATION SHUT OFF VALVES. INSTALL NEW FIN-TUBE RADIATION CONNECTED TO EXISTING PIPING USING NEW FITTINGS AS REQUIRED. AFTER NEW WORK OF WINDOW REPLACEMENT IS COMPLETED. SEE DETAIL FOR FITTINGS REQUIRED.



WRITTEN SPECIFICATIONS ARE PART OF THESE DOCUMENTS.



PROJECT 0801
 DRAWN BY RFB
 DATE 1.27.2010
 SCALE 1/8"=1'-0"
 DRAWING TITLE

LEVEL 2
 PLAN - NORTH

DRAWING NO.
 M-105