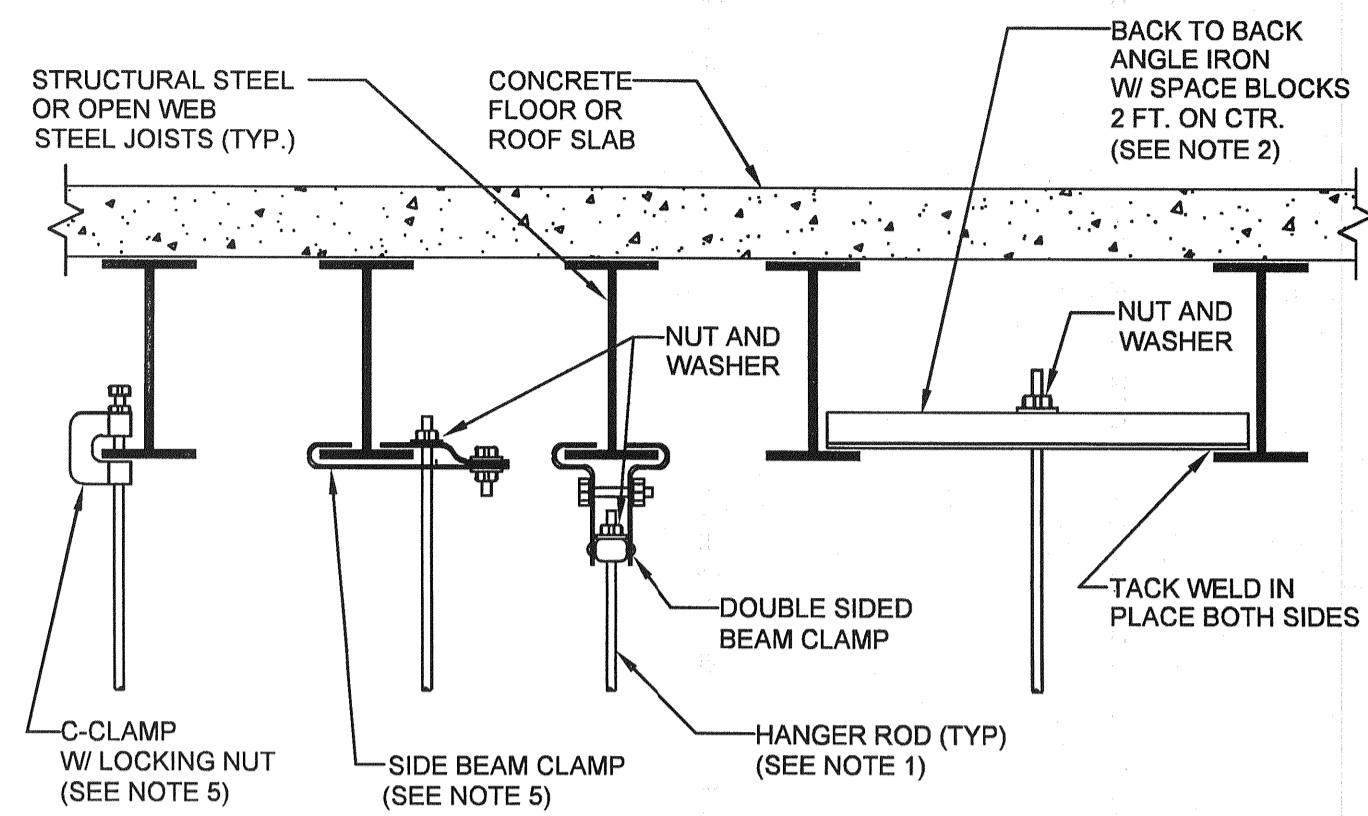


DUCT WIDTH	SUPPORT ANGLE OR EQUIV. CHANNEL	ROD DIA.	MAXIMUM SPACING	MAXIMUM AREA *
25" TO 30"	1 1/2" X 1 1/2" X 1/8"	3/8"	8'-0" O.C.	4 SQ. FT.
31" TO 42"	1 1/2" X 1 1/2" X 1/8"	3/8"	6'-0" O.C.	10 SQ. FT.
43" TO 60"	1 1/2" X 1 1/2" X 1/8"	1/2"	6'-0" O.C.	10 SQ. FT.
61" TO 84"	2" X 2" X 1/4"	1/2"	4'-0" O.C.	-
85" AND UP	2" X 2" X 1/4"	1/2"	4'-0" O.C.	-

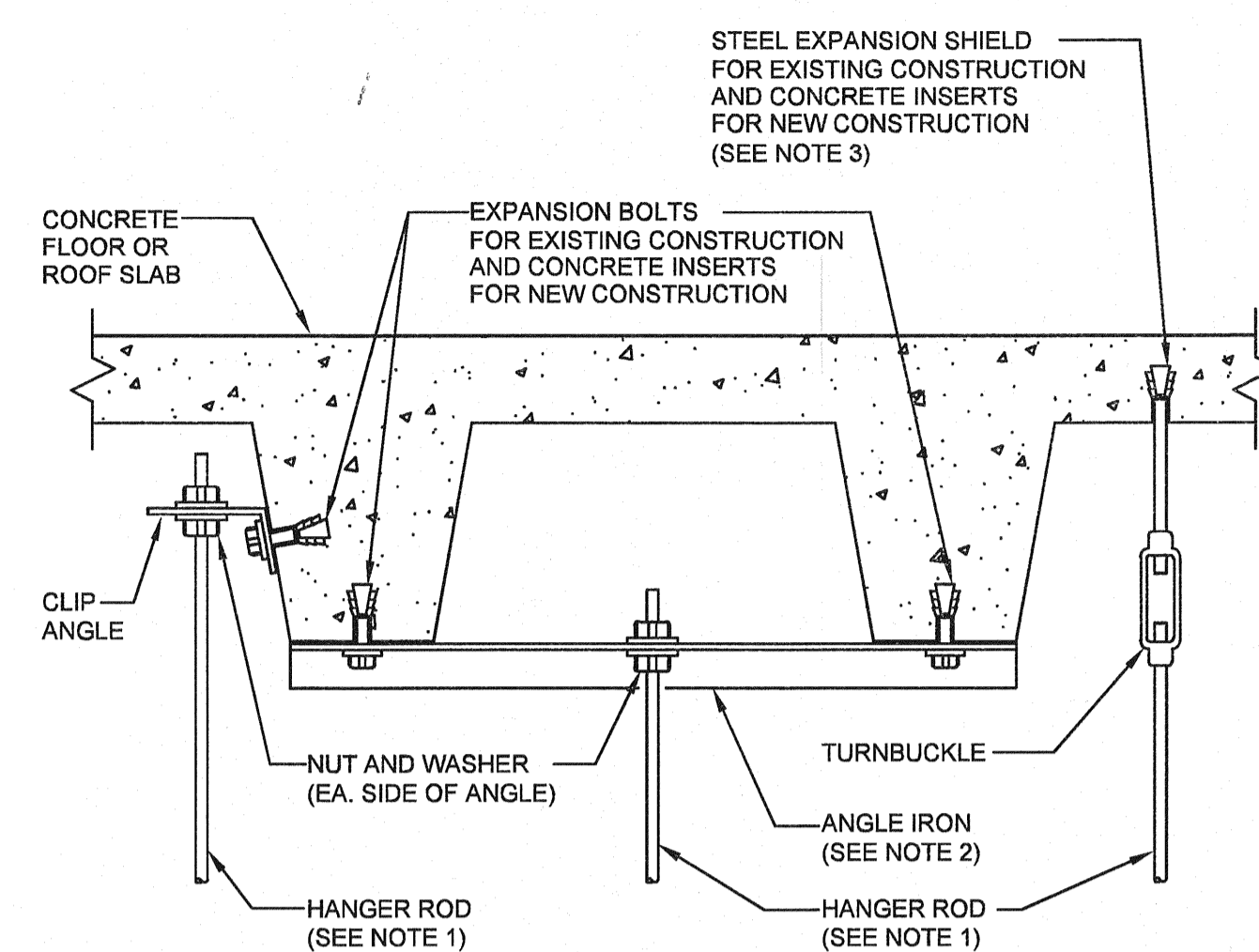
* REDUCE SPACING TO NEXT SMALLER INTERVAL IF DUCT AREA EXCEEDS MAXIMUM

1 DUCT SUPPORT DETAIL
M-300 NOT TO SCALE



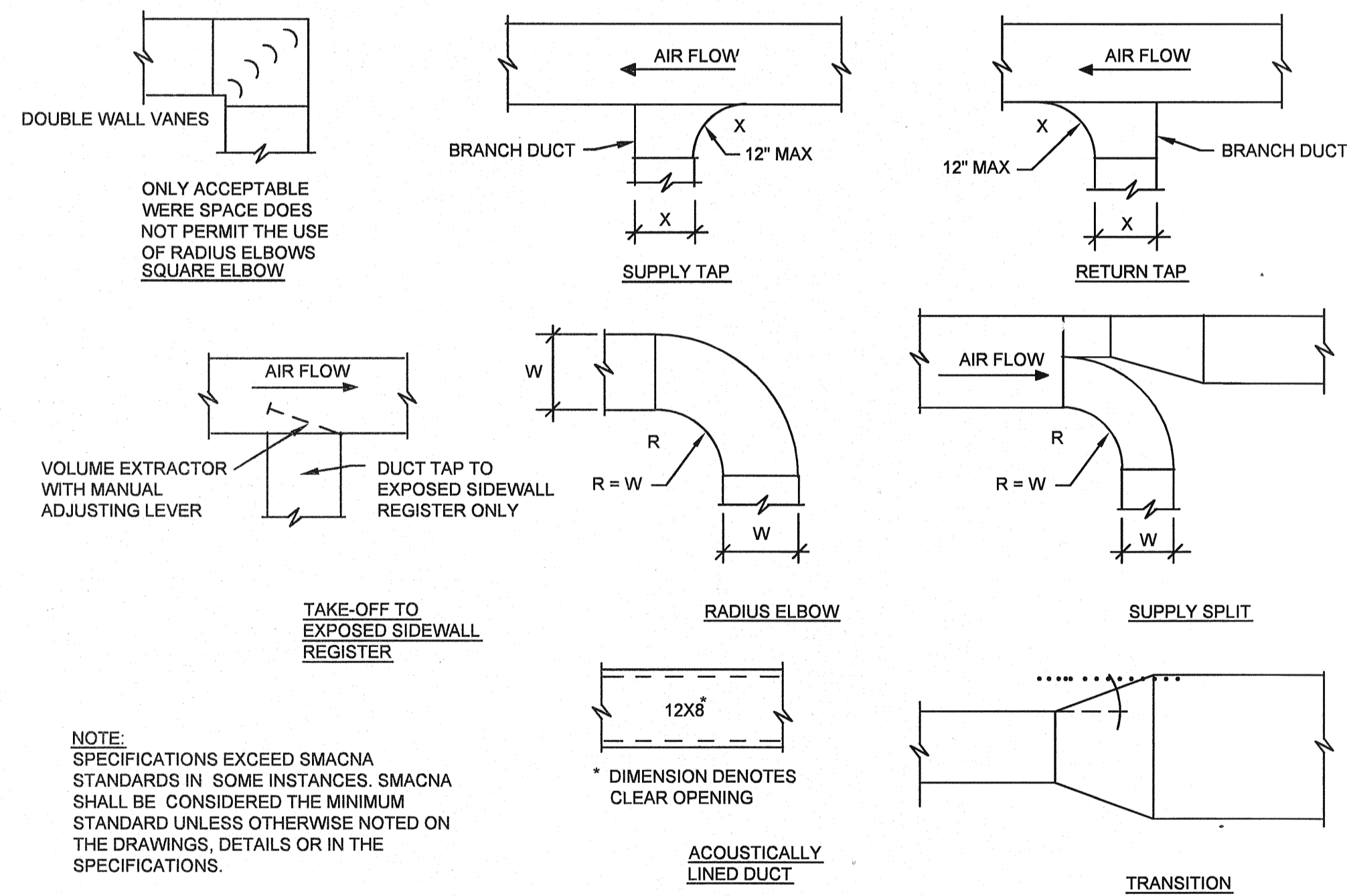
- NOTE:
- REFER TO SPECIFICATIONS FOR PIPE HANGER ROD SIZE. FOR CEILING SUSPENDED EQUIPMENT PROVIDE MIN. 3/8" DIA. HANGER ROD (REFER TO MANUFACTURERS INSTALLATION INSTRUCTIONS).
 - FOR PIPES UNDER 2" USE A SINGLE 1-1/2"x1-1/2"x1/4" ANGLE IRON WITH C-CLAMP. FOR PIPES 2-1/2" AND LARGER USE 3"x3"x1/4" ANGLE IRON BACK TO BACK AS SHOWN.
 - REFER TO "TYPICAL METHOD OF SECURING HANGER RODS TO CONCRETE DECK DETAIL" FOR ATTACHING HANGER RODS TO CONCRETE DECK.
 - REPAIR OF FIREPROOFING IN ORDER TO FACILITATE THE INSTALLATION OF HANGER RODS IN EXISTING CONSTRUCTION SHALL BE BY THE G.C.
 - USE OF C-CLAMPS AND SIDE BEAM CLAMPS IS LIMITED TO PIPING 2-1/2" AND UNDER.

2 TYPICAL METHOD OF SECURING HANGER RODS TO STRUCTURAL STEEL DETAIL
M-300 NOT TO SCALE



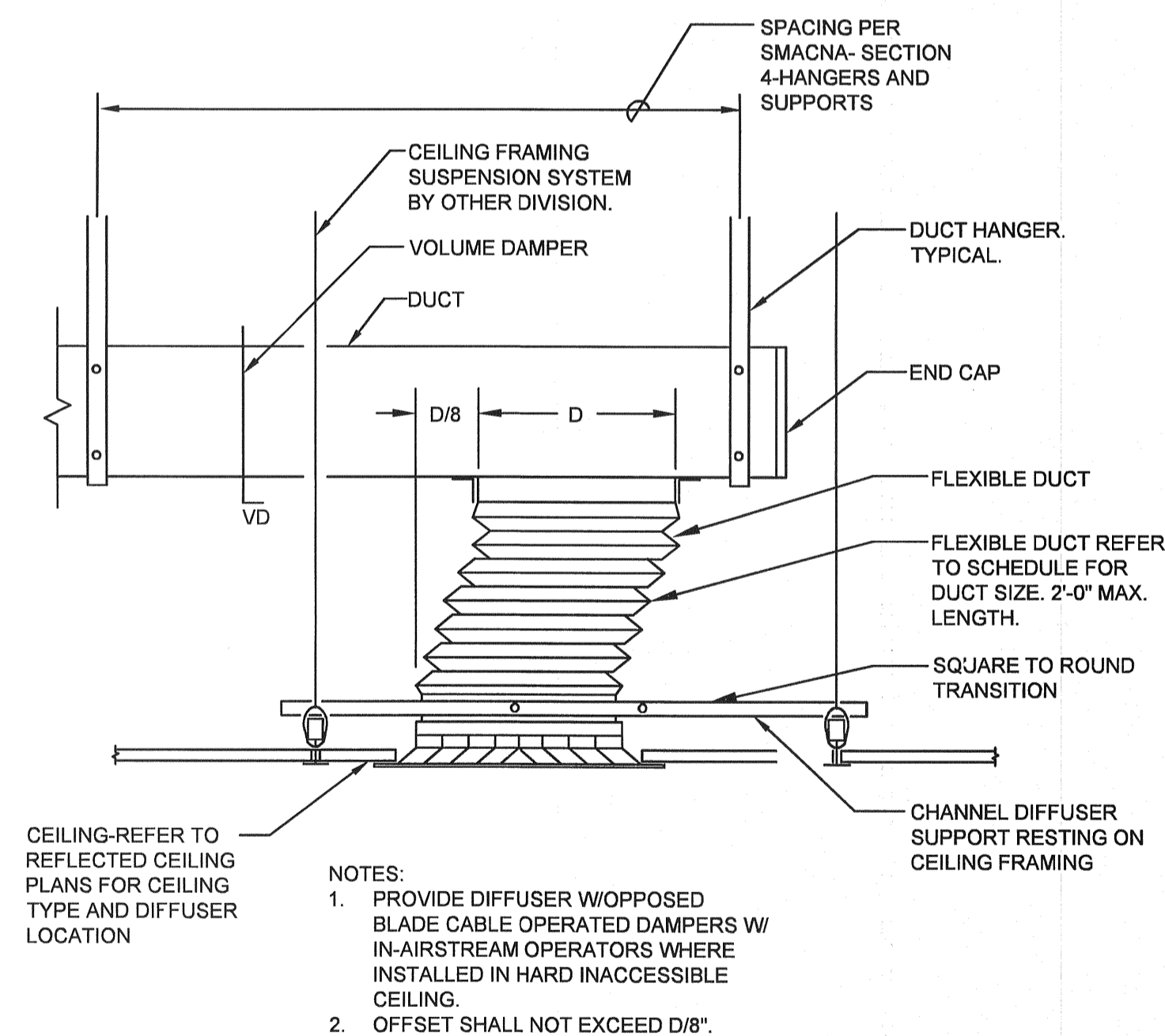
- NOTE:
- REFER TO PIPE HANGER DETAIL FOR HANGER ROD SIZE. FOR CEILING SUSPENDED EQUIPMENT PROVIDE MIN. 3/8" DIA. HANGER ROD (REFER TO MANUFACTURERS INSTALLATION INSTRUCTIONS).
 - FOR PIPES UNDER 2" USE 1-1/2"x1-1/2"x1/4" ANGLE IRON. FOR PIPES 2" AND LARGER USE 3"x3"x1/4" ANGLE IRON.
 - EXPANSION SHIELDS SHALL BE ONLY USED IN SLABS OR BEAMS OF 4" MIN. DEPTH.

3 TYPICAL METHOD OF SECURING HANGER RODS TO CONCRETE DECK DETAIL
M-300 NOT TO SCALE



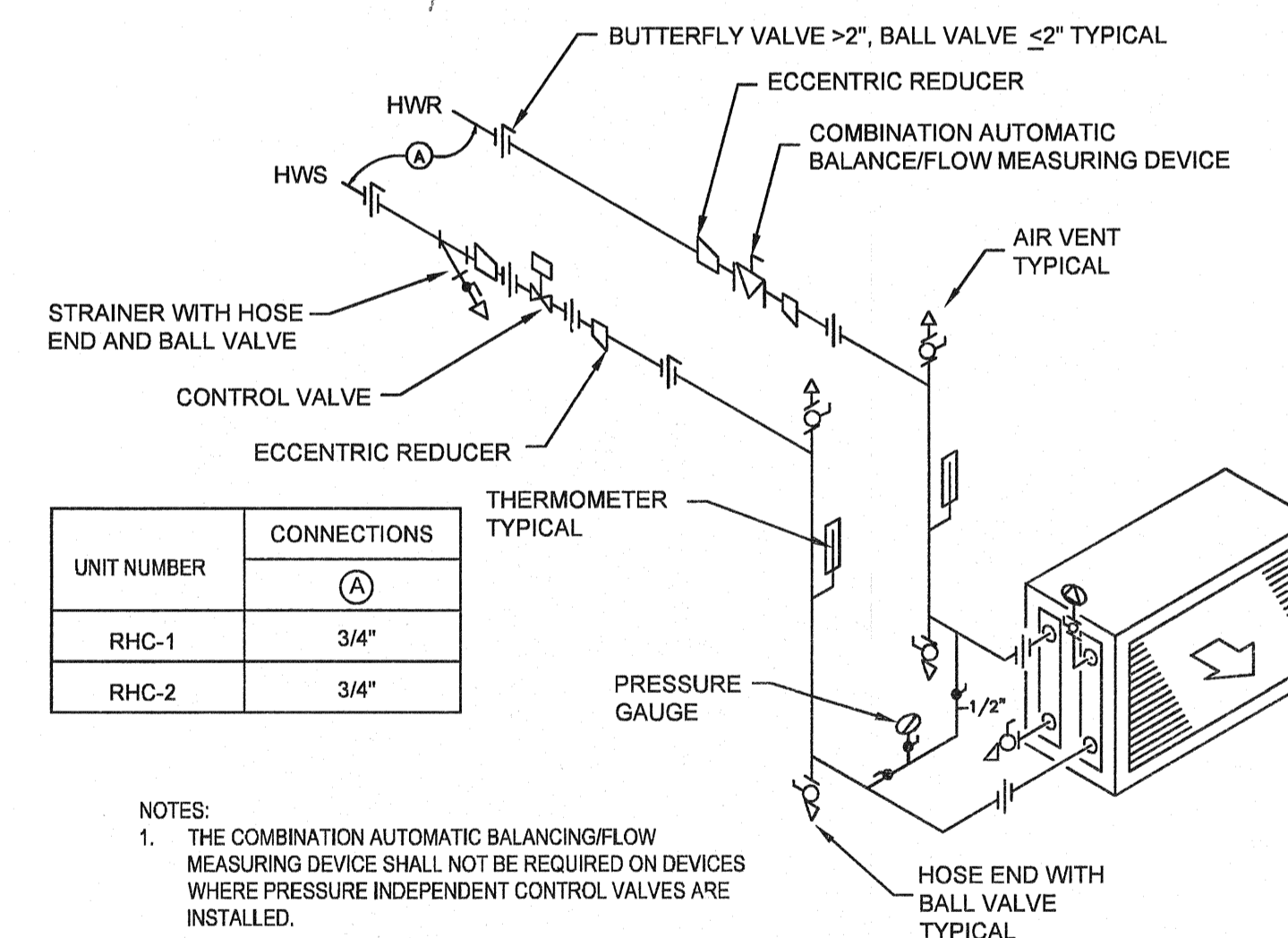
NOTE:
SPECIFICATIONS EXCEED SMACNA STANDARDS IN SOME INSTANCES. SMACNA SHALL BE CONSIDERED THE MINIMUM STANDARD UNLESS OTHERWISE NOTED ON THE DRAWINGS, DETAILS OR IN THE SPECIFICATIONS.

4 DUCT CONSTRUCTION DETAIL
M-300 NOT TO SCALE



- NOTES:
- PROVIDE DIFFUSER W/OPPOSED BLADE CABLE OPERATED DAMPERS W/ IN-AIRSTREAM OPERATORS WHERE INSTALLED IN HARD INACCESSIBLE CEILING.
 - OFFSET SHALL NOT EXCEED D/8".

5 TYPICAL DIFFUSER DETAIL WITH FLEXIBLE DUCTWORK CONNECTION
M-300 NOT TO SCALE

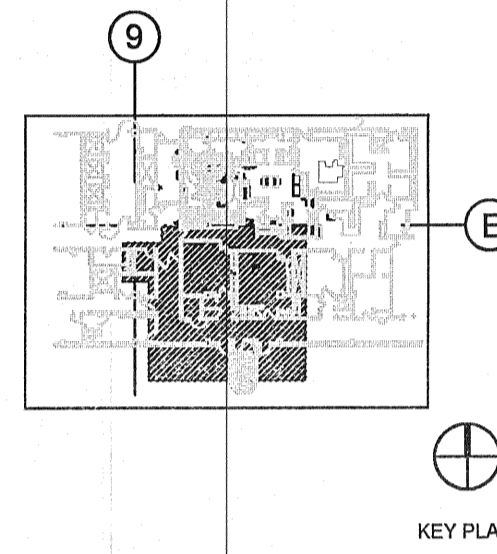


- NOTES:
- THE COMBINATION AUTOMATIC BALANCING/FLOW MEASURING DEVICE SHALL NOT BE REQUIRED ON DEVICES WHERE PRESSURE INDEPENDENT CONTROL VALVES ARE INSTALLED.

6 HOT WATER COIL DETAIL
M-300 NOT TO SCALE

NO.	DATE	REVISION
1	11/01/2010	ISSUE FOR CONSTRUCTION
1	11/01/2010	ISSUE FOR BLDG. DEPT.

Perkins Eastman
422 SUMNER STREET
STAMFORD, CT 06901
T: 203.251.7400
F: 203.251.7474



Owner:

Danbury Hospital
A Difference That Matters
DANBURY HOSPITAL
3 TOWER: R/F & ERCP SUITE:
Room 4 & 5
Danbury, Connecticut

MEP:
KOHLENER RONAN, LLC
301 MAIN STREET
DANBURY, CT
TEL: 203.778.1017
FAX: 203.778.1018
E-MAIL: KRCC@KOHLENERONAN.COM

Structural:
JOHN SMOLEN & ASSOCIATES, LLC
50 DEVINE STREET, UNIT A
NORTH HAVEN, CT
TEL: (203) 248-2000
FAX: (203) 248-2003
E-MAIL: JSA@JOHNSMOLNET.COM

RECEIVED
DEC 13 2010

ABN AIR CONDITIONING AND HEATING, INC.

PROJECT TITLE:
**R/F & ERCP SUITE
ROOM 4 & 5
3 TOWER**

24 Hospital Avenue
Danbury, CT

PROJECT No: 41581.00

DRAWING TITLE:

**DETAILS
- MECHANICAL**

SCALE: NOT TO SCALE

M-300

ISSUE FOR CONSTRUCTION
November 1, 2010